



F-789SGA Emulator USER MANUAL

All the scientific calculation and functions of F-789SGA Emulator are equivalent to F-789SGA Scientific Calculator.

We recommend you to read this user manual and all the important notices before you start using the Emulator.

Please keep this user manual with you for future use.



TABLE OF CONTENTS

OVERVIEW	2
Before Start	2
PC System Requirements	3
Using this Manual	3
USING EMULATOR	4
To execute the Emulator	4
To operate the Emulator	6
Emulator Menu	7
Emulator shortcut menu	6
Display the Extra LCD in a separated window	8
Change the Extra LCD window size	8
Capture the calculator LCD image to the windows clipboard	9
Save the calculator LCD image as bitmap format	9
Exit Emulator	9
TIPS OF TROUBLE SHOOTING	10

OVERVIEW

This software is aim to emulate operation and display of Canon F-789SGA Scientific Calculator on your computer. You can experience the benefits as follow:

1. Powerful tool for you to use or to show the key-in / calculation.
2. To emulate F-789SGA Scientific Calculator by displaying the real product image on your computer screen.
3. Allows you to display the LCD of the calculator in a separated window, also, you can enlarge it if needed.
4. Image of the LCD can be captured (copy to the Windows clipboard or save as bitmap files).

BEFORE START

1. Download and unzip the emulator files from Canon Electronic Business Machines (H.K.) Co., Ltd. website.
2. Prepare a PC with minimum system requirements listed below.
3. Read this manual carefully.

PC SYSTEM REQUIREMENTS

- Operating systems: Windows® 8.1, Windows® 10, Windows® 11
- Display resolution: 1024 x 768 display or above
- 1GHz CPU or above
- 512MB RAM or above
- Adobe Reader® 10.0 or later
- With internet access

Notes: Company and product names used herein are trademarks of their respective owners.

USING THIS MANUAL

1. This manual covers the operation of the software in your computer. The procedures in this manual assume that you have been already familiar with the following standard computer operations.
 - Menu operations using the mouse, including, clicking, double-clicking, dragging, etc.
 - Text input using the keyboard
 - Icon operations, general window operations, etc.If you are not familiar with these types of operations, refer to the user documentation of your computer.
2. Display examples shown in this manual are intend for illustrative purpose only. The actual text and values that appear on display may differ from the examples shown in this manual.
3. The screen shots shown in this manual are all base on the English version of Windows® 10.
4. Note that the actual appearance of the screen display of this software depends on your computer system setting and the operation system you are using.

USING EMULATOR

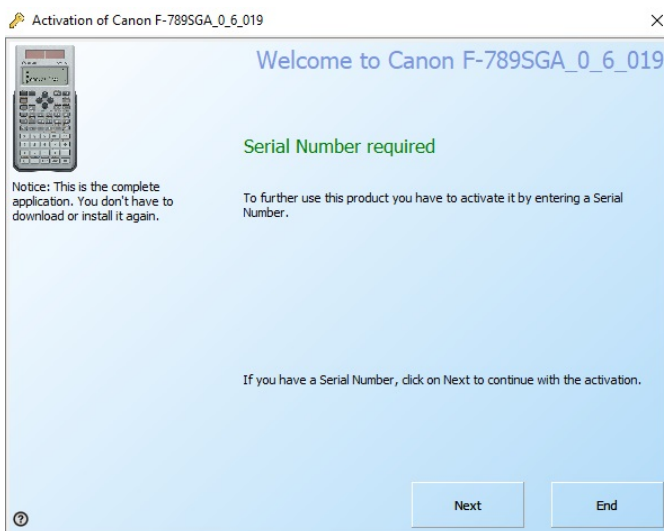
Important!

If you did not complete the online activation, the emulator will not start.

Make sure an internet connection is available before emulator online activation.

TO EXECUTE THE EMULATOR

1. Double Click the “Canon F-789SGA_0_6_019” file.
2. Click **【Next】** button.



3. Enter Serial Number, Name/Company & Email address. Then click **【Next】** button.

Activation of Canon F-789SGA_0_6_019

Please enter the activation data

Please enter all required information for the activation process.

Enter Serial Number

Where do you find your Serial Number?

Enter Name / Company / Organisation

Enter your E-mail Address

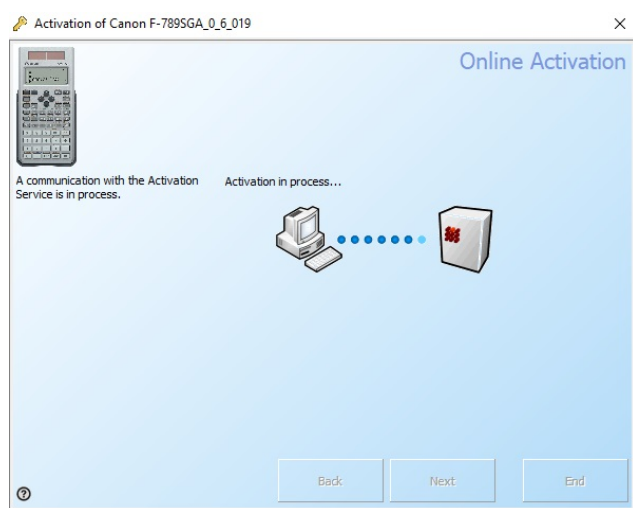
required

Back Next End

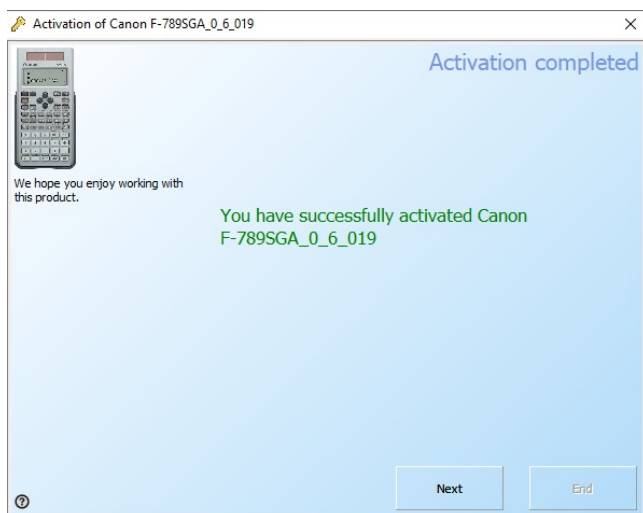
4. Make sure an internet connection is available. Then click **【Next】** button.



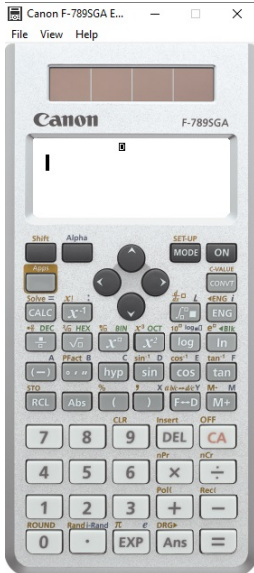
5. Activation in process.



6. When online activation is success you can see the Activation completed display. Then click **【Next】** button.



7. Canon F-789SGA Emulator will start after online activation finished, next time you can double click “Canon F-789SGA_0_6_019” file to start the emulator software.



TO OPERATE THE EMULATOR

Using the mouse pointer

You can click the keys on the Emulator as if the key input to the scientific calculator.

Using the computer keyboard

You can also perform the following key operations via your computer keyboard.

Computer Keyboard	Calculator Key/Function
Enter	[=]
↑ ↓ ← →	[▲] [▼] [◀] [▶]
+ − * /	[+] [−] [×] [÷]
0 – 9	[0] – [9]
. (decimal)	[.]
[space bar]	[CA]
[Backspace] [Delete]	[DEL]
[Ctrl+C]	Screen Capture
[Page Up]*	Enlarge Extra LCD Size
[Page Down]*	Reduce Extra LCD Size

* When Extra LCD window displayed.

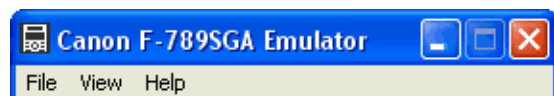
Notes:

Keys pressed will be highlight.

The calculation speed of the emulator depends on the speed of your computer, and may be different from the calculating speed of the actual calculator.

EMULATOR MENU

Following items are available in the Emulator menu.

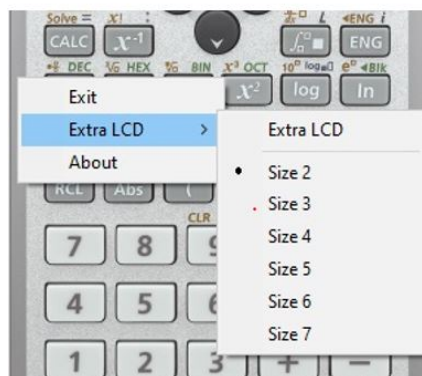


Menu Item	Submenu Item	Description
File	Reset [Ctrl + R]	Initialize all calculation functions and settings in the PC Emulator.
	Capture Display [Ctrl + C]	Capture LCD screen display to computer clipboard.
	Save display as BMP [Ctrl + S]	Save image as BMP format file.
	Exit	Exit the Emulator.
View	Extra LCD	Displays the calculator LCD in a separated window. When selected, an indication ✓ mark will be shown.
	Size 2 - 7	Change the size of Extra LCD window.
Help	About	Display the Emulator version.

* To read the User Manual, Adobe Reader® 10.0 or above is required.

EMULATOR SHORTCUT MENU

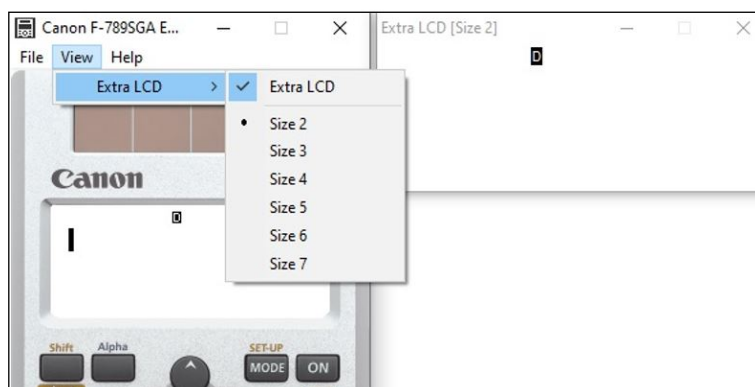
A shortcut menu will be show by right clicking on the emulator.



Menu Item	Submenu Item	Description
Exit		Exit the Emulator.
Extra LCD	Extra LCD	Display the calculator LCD in a separated window.
	Size 2 - 7	Change the size of Extra LCD window.
About		Display the Emulator version.

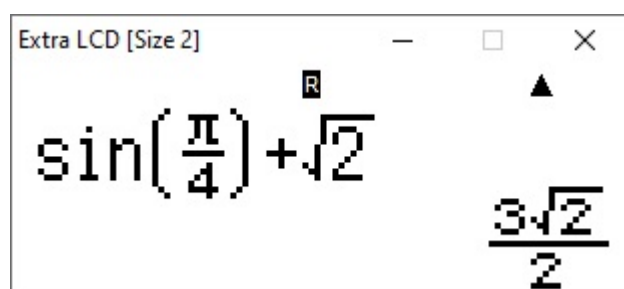
DISPLAY THE EXTRA LCD IN A SEPARATED WINDOW

Select View > Extra LCD on the menu or select Extra LCD from the shortcut menu.



A check mark will be place next to the Extra LCD button once it selected.

This is an example of the Extra LCD display



To close the Extra LCD window, select Extra LCD on the Emulator menu again or click the cross icon on the top right corner of the Extra LCD window.

You can change the position of the Extra LCD window. Just position the mouse pointer on the Extra LCD window's title (Blue), keep clicking the mouse button and move the Extra LCD window.

CHANGE THE EXTRA LCD WINDOW SIZE

Using menu buttons:

Select one of the size buttons in the Emulator menu " View > Extra LCD " from "Size 2" to "Size 7" to change the size of the Extra LCD window.

"●" mark will appear to indicate the LCD size selected.

Using shortcut keys:

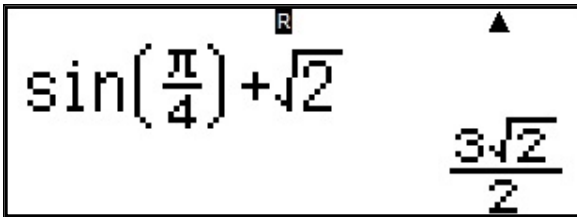
Click the Extra LCD window.

Press [Page Up] key to enlarge or [Page Down] key to reduce the size of the Extra LCD window.

CAPTURE THE CALCULATOR LCD IMAGE TO THE WINDOWS CLIPBOARD

Select File > Capture Display in the Emulator menu to capture the current image of the LCD screen.

You can also use [Ctrl + C] to capture the LCD image to the Windows clipboard.



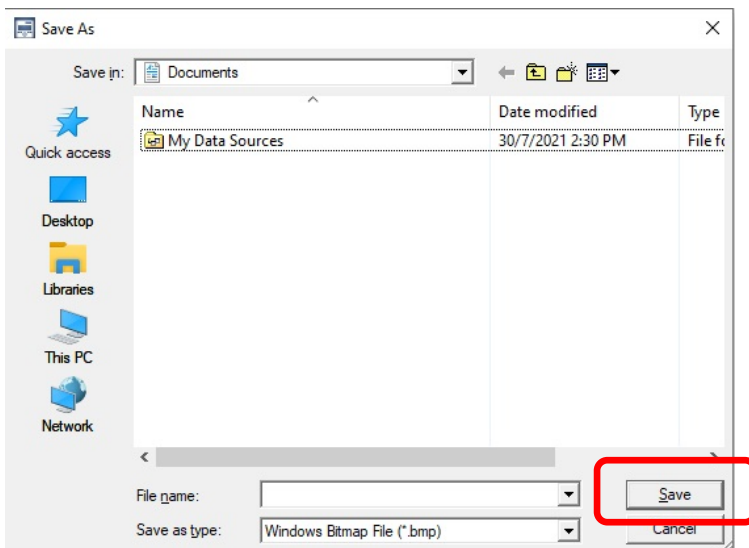
Notes:

The outer frame of the captured LCD image is always display with a boundary.

If the LCD image is capture when the Extra LCD function was on, images size captured will base on the size of the extra LCD window.

SAVE THE CALCULATOR LCD IMAGE AS BITMAP FORMAT

Select File > Save Display as BMP in the Emulator menu



Enter a file name and then select [Save].

EXIT EMULATOR

You can exit / close the Emulator by:

- Press the cross icon ☒ on the top right corner of the Emulator. or
- In the File menu, select [Exit].
- In the shortcut menu, select [Exit].

Notes:

All the settings and data will reset to initial defaults after exit.

TIPS OF TROUBLE SHOOTING

- If you want to press [Page Up] or [Page Down] key to resize the Extra LCD window, make sure you have selected the Extra LCD window.
- If you do not see anything on the Emulator LCD display, it maybe because [OFF] button was pressed. You can press [ON] key to turn it on again.
- Differences between the Emulator and actual calculator:
 - The cursor in the Emulator LCD display is not flashing.
 - The arrow keys have no quick seek function by pressing and holding.
 - No LCD display contrast adjustment function in the Emulator.
 - All memories and settings will be initialized when the Emulator exit operation.
 - No automatically power-off (APO) function in the Emulator.

~ END ~